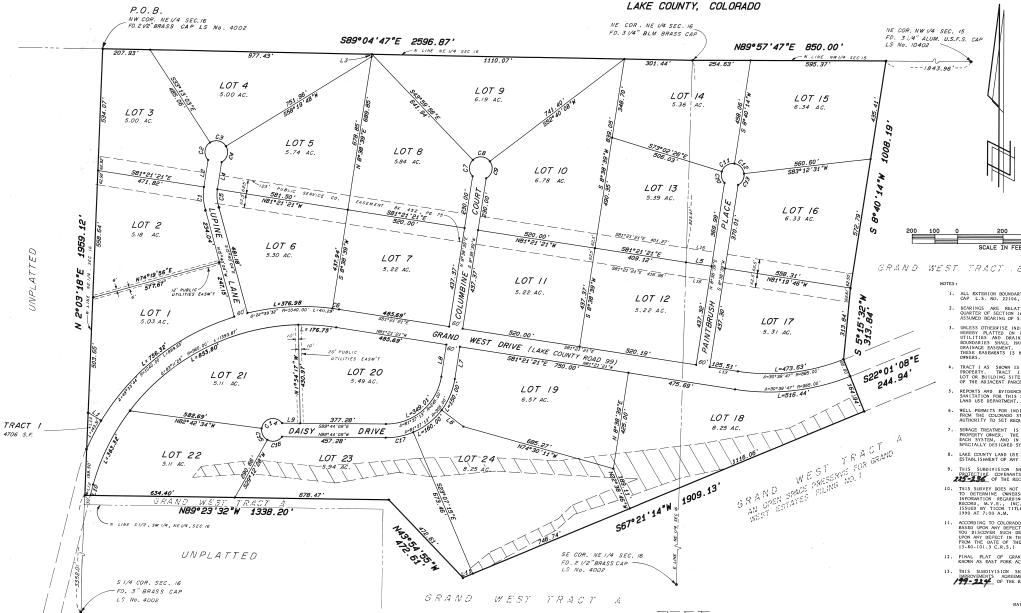


FINAL PLAT OF GRAND WEST ESTATES FILING NO. 1

A PORTION OF THE NORTHEAST QUARTER OF SECTION 16 AND
THE NORTHWEST QUARTER OF SECTION 15, TOWNSHIP 9 SOUTH,
RANGE 80 WEST OF THE SIXTH P.M.,
LAKE COUNTY, COLORADO



LINE	BEARING	DISTANCE	CURVE	NO. 1/4	RADIUS	TANGENT	CHORD	CHORD BEARING	CHORD
1	S 89° 23' 19" W	69.33	1	139.66	232.22	64.33	109.66	S 75° 30' 43" E	109.66
2	S 89° 23' 19" W	138.66							
3	S 89° 23' 19" W	138.66							
4	S 89° 23' 19" W	138.66							
5	S 89° 23' 19" W	138.66							
6	S 89° 23' 19" W	138.66							
7	S 89° 23' 19" W	138.66							
8	S 89° 23' 19" W	138.66							
9	S 89° 23' 19" W	138.66							
10	S 89° 23' 19" W	138.66							
11	S 89° 23' 19" W	138.66							
12	S 89° 23' 19" W	138.66							
13	S 89° 23' 19" W	138.66							
14	S 89° 23' 19" W	138.66							
15	S 89° 23' 19" W	138.66							
16	S 89° 23' 19" W	138.66							
17	S 89° 23' 19" W	138.66							

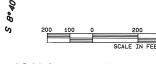
LINE	BEARING	DISTANCE	CURVE	NO. 1/4	RADIUS	TANGENT	CHORD	CHORD BEARING	CHORD
1	S 89° 23' 19" W	69.33	1	139.66	232.22	64.33	109.66	S 75° 30' 43" E	109.66
2	S 89° 23' 19" W	138.66							
3	S 89° 23' 19" W	138.66							
4	S 89° 23' 19" W	138.66							
5	S 89° 23' 19" W	138.66							
6	S 89° 23' 19" W	138.66							
7	S 89° 23' 19" W	138.66							
8	S 89° 23' 19" W	138.66							
9	S 89° 23' 19" W	138.66							
10	S 89° 23' 19" W	138.66							
11	S 89° 23' 19" W	138.66							
12	S 89° 23' 19" W	138.66							
13	S 89° 23' 19" W	138.66							
14	S 89° 23' 19" W	138.66							
15	S 89° 23' 19" W	138.66							
16	S 89° 23' 19" W	138.66							
17	S 89° 23' 19" W	138.66							

CONTRACT COMPANY STATEMENT:
LAKE COUNTY SURVEY CO., BEING OFFICE IN THE RECORDS AND DEEDS OFFICE OF LAKE COUNTY, COLORADO, HAS REVIEWED THE SURVEY AND HAS DETERMINED THAT THE SURVEY IS CORRECT AND ACCURATE AND IS NOT AFFECTED BY ANY OTHER SURVEY OF ANY KIND.

SURVEYOR'S STATEMENT:
I, SURVEYOR, A P.R. OF CO., REGISTERED PROFESSIONAL LAND SURVEYOR AND HOLD LICENSE NO. 10201, HAVE SURVEYED THE PLAT HEREON AND CERTIFY THAT THE MEASUREMENTS AND CALCULATIONS WERE MADE CAREFULLY AND TO THE BEST OF MY KNOWLEDGE AND BELIEF, AND THAT THE PLAT IS TRUE AND CORRECT.

GRAND WEST ESTATES FILING NO. 1 Summary Table

TOTAL PLAT AREA	121.32 Acres
TOTAL FILING AREA	121.32 Acres
TOTAL ROAD AREA	121.32 Acres
TOTAL LOT AREA	121.32 Acres
SHALLEST LOT	1.25 Acres
LARGEST LOT	1.25 Acres
AVERAGE LOT	5.05 Acres



NOTES:
1. ALL DISTANCES AND BEARINGS ARE TO BE CONSIDERED AS PLATTED FROM THE POINT OF BEGINNING TO THE POINT OF ENDING OF EACH LINE OF THE SURVEY.
2. THE PLAT IS SUBJECT TO ANY OTHER SURVEY OF ANY KIND WHICH MAY BE MADE OF ANY PART OF THE PLAT.
3. THE PLAT IS SUBJECT TO ANY OTHER SURVEY OF ANY KIND WHICH MAY BE MADE OF ANY PART OF THE PLAT.
4. THE PLAT IS SUBJECT TO ANY OTHER SURVEY OF ANY KIND WHICH MAY BE MADE OF ANY PART OF THE PLAT.

STATE OF COLORADO
COUNTY OF LAKE
KNOW ALL MEN BY THESE PRESENTS:
THAT GRAND WEST ESTATES FILING NO. 1, A COLORADO CORPORATION, BEING THE OWNER OF THE FOLLOWING TRACTS OF LAND:
... (Legal description of the property) ...
... (Additional details about the filing) ...

IN WITNESS WHEREOF, GRAND WEST ESTATES FILING NO. 1 HAS CAUSED THESE PRESENTS TO BE SIGNED BY ME AND APPROVED BY THE BOARD OF DIRECTORS OF SAID CORPORATION ON THE 31st DAY OF DECEMBER 1990.

John P. Linn
DIRECTOR

APPROVAL OF COUNTY COMMISSIONERS:
I, CLERK OF COUNTY COMMISSIONERS, DO HEREBY CERTIFY THAT THE ABOVE PLAT HAS BEEN FILED IN THE OFFICE OF THE COUNTY CLERK AND RECORDS OF LAKE COUNTY, COLORADO THIS 31st DAY OF DECEMBER 1990.

D. J. ...
CLERK OF COUNTY COMMISSIONERS

MONUMENT VALLEY ENGINEERS, INC.
1005 NORTH 10TH STREET, SUITE 100, DENVER, COLORADO 80202
PHONE: 333-1111
FAX: 333-1111

GRAND WEST FILING NO. 1
DATE: 11-30-90
SCALE: 1" = 100'
SHEET 1 OF 1